

Thesis Student Management

A High Tech & Human-Centred
Student Information System



thesis
SM

Transform your institution with Thesis Student Management (SM), a comprehensive Student Information System engineered to streamline administrative processes and cultivate a collaborative educational environment that enhances the learning journey.

Trust in our unwavering commitment to data security, compliance, and scalability, backed by unparalleled training and ongoing support.

Elevate your institution's success with Student Management—where innovation meets education.

Table of Contents

About Thesis and Student Management	4
Implementation	6
UK Higher Education Model	7
People	9
Academics	10
Admissions	12
Billing	14
Automation and Dashboards	15
System Management	16
Reporting	17
UK Statutory Key Facts	18
Technical Key Facts	19



Streamlined Student Information Systems

High tech and human-centred

Dedicated to Student Systems

Thesis empowers functional users at small and mid-size colleges and universities in the UK, Canada and US to do more with their Student Information System (SIS).

We offer a highly focused and standardised approach to solving your core student administration issues.

Building upon our legacy of SIS products (CAMS, QLandEMS), we're proud to offer two modern, cloud-based solutions. With ThesisStudent Management and Elements, we help universities deploy a predictable cloud-hosted student system engine that cooperates with existing institution systems and, ultimately, powers change.

Our systems are configurable, modern and cloud-based with faster implementation than the industry average, and with more integration flexibility. Our self-service tools put the power of the system in the clients' hands, reducing their need to pay for legacy system customisations.

Join us to unlock the potential of your Higher Education Institution to provide streamlined student journeys.

Our Mission

We make the mission critical processes at colleges and universities easy, intuitive, and effective.



Our Culture

Our employees are our driving force and they make a profound, direct impact on igniting the change needed to create a world-class SIS of the future. Our team comprises passionate industry experts. We deeply care about what we do every day because we recognise the immense significance of our mission. Our commitment is unwavering, and we are dedicated to shaping a future where Higher Education Institutions thrive and students excel.



Our Vision

We make the mission critical processes at colleges and universities easy, intuitive, and effective.

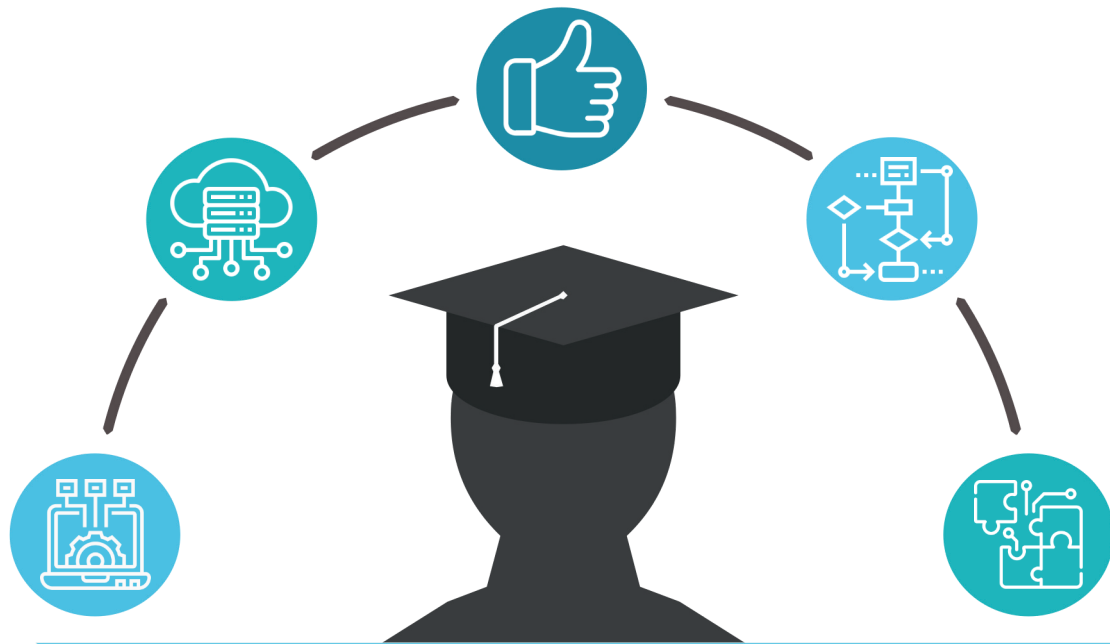


Thesis Student Management



Thesis Student Management is a modern, user-friendly, cloud-based SIS, covering the complete applicant and student journey, which is designed for colleges and universities in the UK and Canada.

Our system goes beyond a typical SIS; it's a catalyst for positive change, offering a user-friendly and secure platform to redefine the future of education with accessible, efficient, and student-centric technology.



A Modern Solution

Elevate user satisfaction, boost efficiency and experience an intuitive UI that's designed for easy learning, empowering you to personalise user access and functionality while ensuring utmost security on multiple levels.



Cloud Based

A scalable solution that grows with your institution, adapting to changing needs and requirements, on a platform that is fully supported to international standards providing reliability and dependability in a cost-effective and future-proof manner.

UK-Ready

A UK-Ready system, developed in close collaboration with the UK market, with a full suite of UK Statutory functionality. We believe in maximising shared benefits globally while also supporting the individual uniqueness of locales.



No-Code Configuration

Give your team the power to unleash their creativity and allow your IT department to focus on more important things. With the ability to create seamless processes, your staff can ensure consistency and reduce the burden of manual tasks.

Seamless Integration

No system stands alone within the modern digital ecosystem. Our open and accessible APIs, along with our Integration platform, bridges the gaps and connects with ease, allowing you to maximise efficiency, minimise complexity and reduce data duplication.





Implementation

Our efficient implementation process is built on thoroughly understanding the needs of your institution and your users. We will support you every step of the way, ensuring your new SIS is set up correctly and that its primary users are fully prepared to leverage its full potential.

Faster than Industry Standard: We’ve honed our implementation processes to bring you a cloud-based SIS within 12-24 months.

Consultant Expertise: Our Implementation Consultants bring both an in-depth expertise of Thesis Student Management and Higher Education in the UK, to support the implementation process.

Training: Our Implementation Team will provide training enablement throughout the implementation, to ensure you are ready and confident for Go-Live.

Data Migration: We provide an iterative Data Migration strategy to transfer student records, enrolment information, academic history and other crucial data points to your new SIS, maintaining data integrity and accuracy throughout the process.

Additional Support: Use Thesis Community and Customer Support to submit questions to your peers or open a support case.

Plan & Prepare



Core



Curriculum*



Admissions*



Registry*



Deploy



UAT



SIT



Assessments,
Progression &
Classification*



Billing*



* Each functional workflow in our iterative implementation includes:

- ◆ Configuration
- ◆ Training
- ◆ Quality Assurance
- ◆ Testing
- ◆ Data Migration

UK Higher Education Model



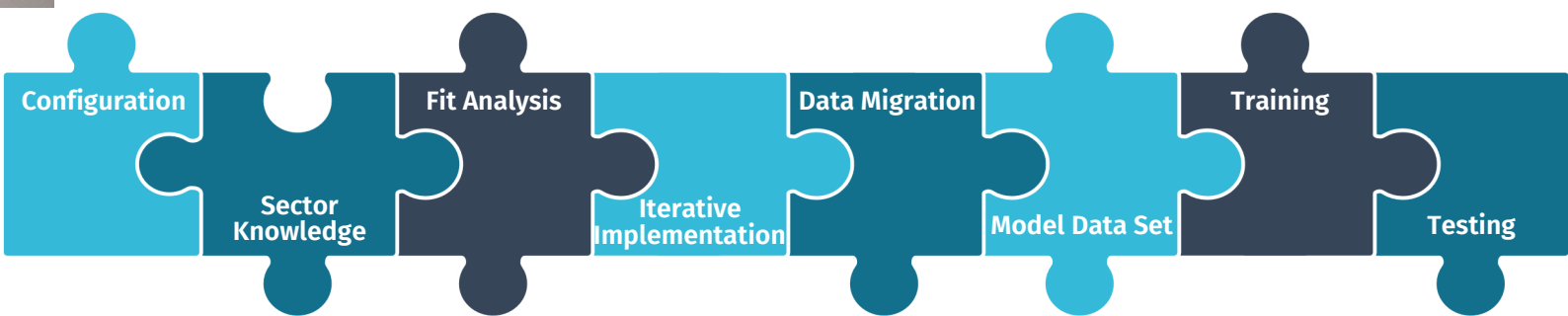
The Thesis Student Management UK Higher Education Model (HEM) offers a unique approach to a SIS Implementation, utilising our extensive knowledge of Higher Education to support institutions implementing our system.



A comprehensive collection of preconfigured, industry-leading processes within Thesis Student Management, inspired by the UCISA capability model and our vast sector expertise.

Enhanced with an iterative implementation process, encompassing thorough testing, comprehensive training, and seamless data migration.

Crafted to optimise the implementation process, mitigate risks, and accelerate time to value, establishing a robust foundation for your institution to develop upon, aligning with your current and future business requirements.



Configuration: Beyond Standard Configuration

Offering 70 preconfigured processes and automation across all functional areas. *The HEM offers a robust foundation that meets numerous industry standards. You can save valuable time during implementation by not having to develop these core processes and, instead, have the flexibility to customise and improve them to perfectly align with your business needs, eliminating risk and expediting implementation.*

Sector Knowledge: Crafted with Expertise in UK HE

Drawing upon the extensive experience of our Thesis colleagues in the sector and the ever-evolving needs of our valued clients.

You can have complete confidence that the HEM will effectively meet your institutions' requirements, supported by Thesis' in-depth understanding of the UK Higher Education industry.

Fit Analysis: A Perfect Fit?

The HEM goes the extra mile by conducting a comprehensive Fit Analysis before kicking off the implementation process.

You will have a clear understanding and appreciation of the content included in the HEM, the extensive capabilities of Thesis Student Management, and the specific deliverables that will be provided throughout the implementation.

Iterative Implementation: Systemic Approach

A progressive implementation methodology, complete with integrated quality assurance measures.

Witness a seamless implementation process that results in quicker time to value, and ensures adherence to the highest standards essential for a successful go-live.

Data Migration: Ongoing Data Migration

As an essential part of implementation, data migration seamlessly blends with configuration and training in an iterative manner..

You can rest assured knowing that your data migration is a gradual process, carefully developed throughout the implementation, rather than a last-minute rush. This approach also enables you to conduct testing on your set-up using real-life data, ensuring accuracy and reliability.

Model Data Set: Guided by Data

Supported by a model data set, illustrating a wide range of curriculum, applicants, and students in various situations.

The Model Data Set will be provided at the start of the implementation in an environment accessible to key users. The data set is invaluable for facilitating the implementation process and empowering your users through comprehensive training. The data set will provide users to refer to key scenarios to enable a deeper understanding of how to effectively utilise the system.

Training: Learn As We Go

Training for system configuration and functional use is seamlessly integrated into each step of the implementation process.

Our training empowers essential users to enhance their knowledge and expertise while advancing through the implementation, leading to a streamlined process and heightened proficiency.

Testing: Test As We Progress

The testing process is conducted iteratively, aligning with the stages of HEM implementation. By conducting iterative testing, we guarantee that configuration is thoroughly tested using real-life data. This allows us to swiftly and effortlessly identify and implement any necessary changes within each work stream, rather than waiting until the end of the implementation process.

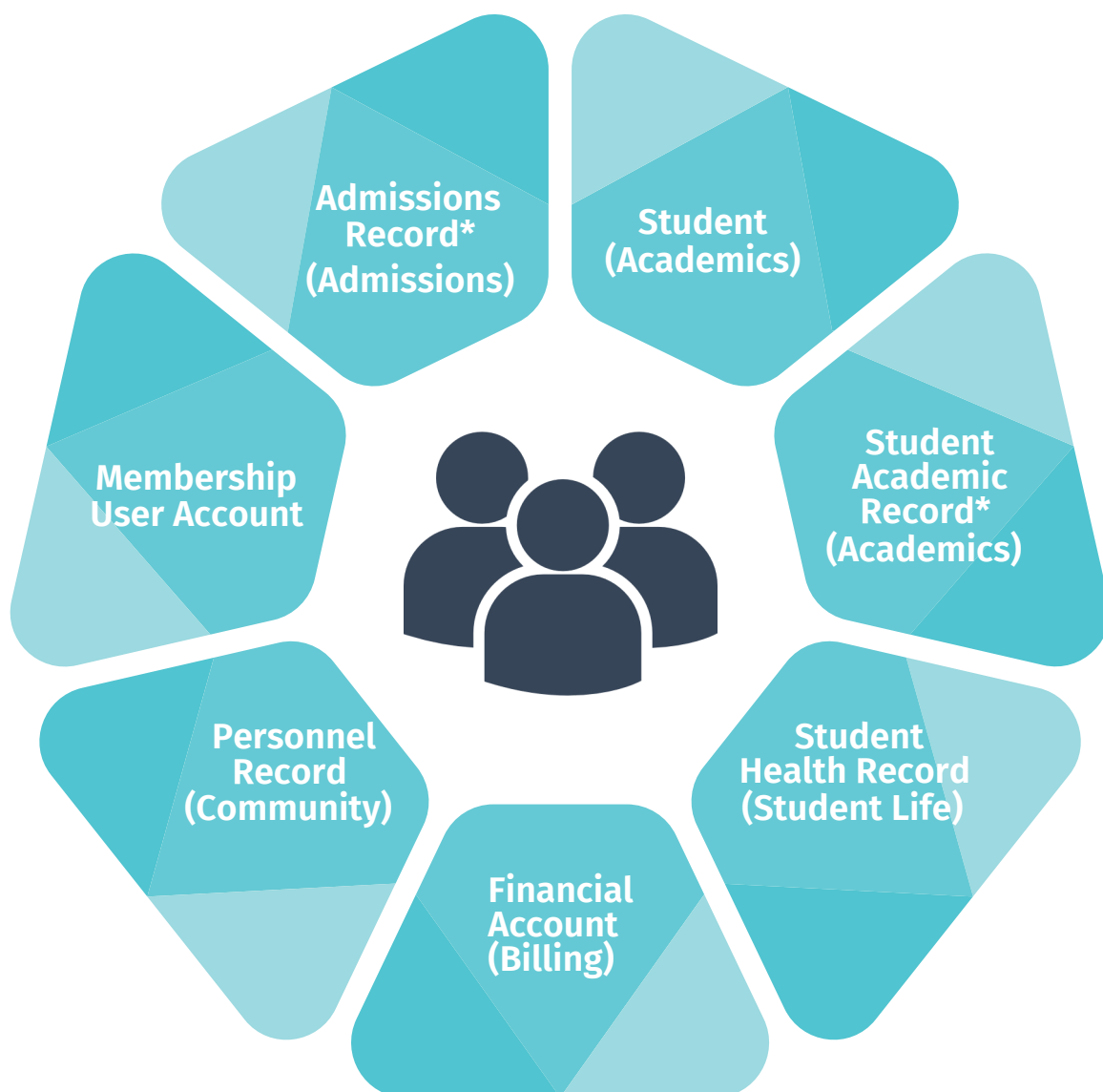




People

Thesis Student Management is a person-centric system; all people, whether applicants, students or staff, have a central Person Record, which holds Biographic and Demographic data.

Linked to the Person Record are all the related Records, supporting cross-system reporting and analysis and easy navigation through the system. Duplicate Matching, using institution defined criteria, allows users to easily identify and resolve duplicate Person Records, moving any attached records to the merged Person Record.



**Creation of multiple records per person is possible*



Academics

Get flexible curriculum management, supporting degree programmes with multiple pathways, and a full suite of student management and assessments functionality, including a complex rule builder for Progression and Classification processes.

Thesis Student Management provides self-service pre-enrolment and enrolment for students, with a comprehensive student portal, where students can view their progress throughout their degree.

Curriculum

Thesis Student Management Curriculum functionality allows for institutions to set up a complex Curriculum structure, with multiple pathways for a single Academic Programme:

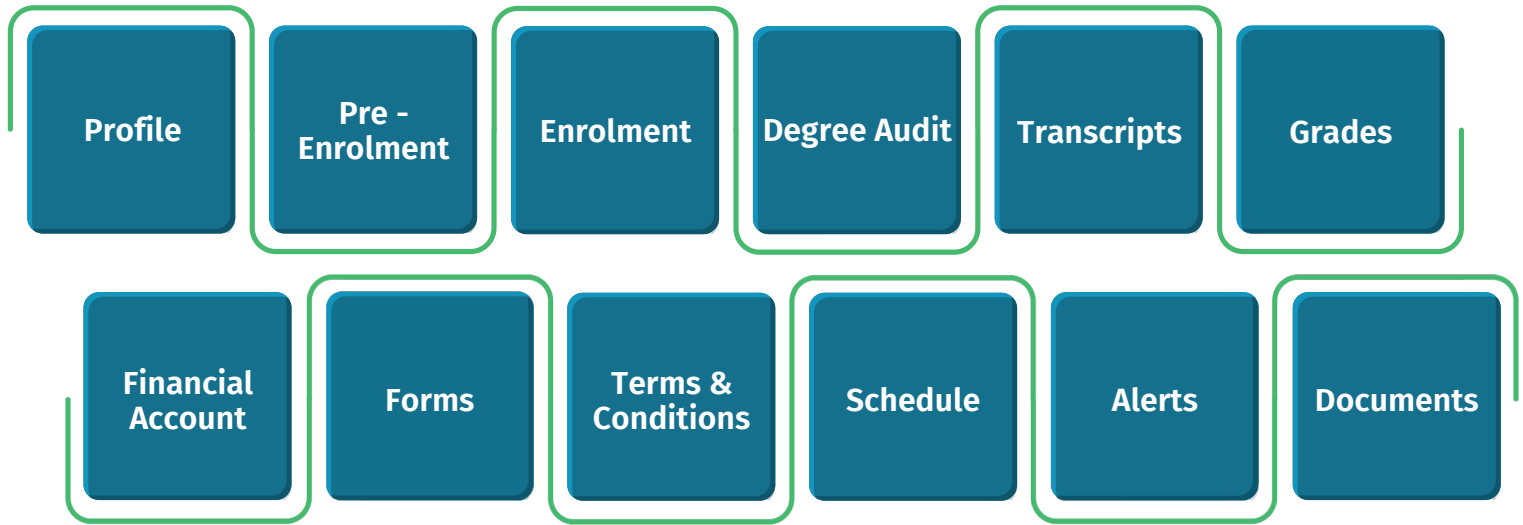


Student Management

The Student Management Functionality covers all key areas of the student journey, supported by a Student Portal:

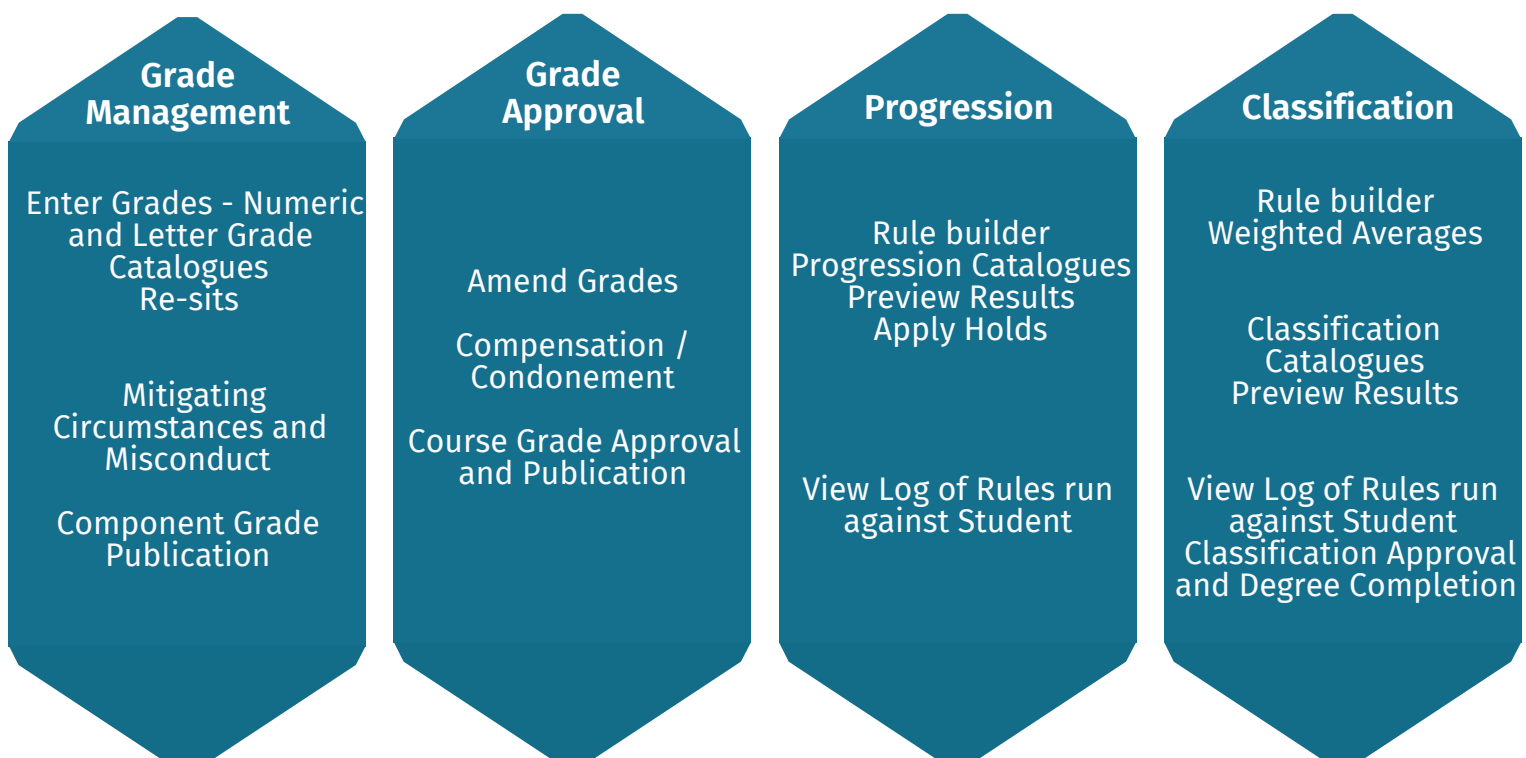


The Student Portal with Thesis Student Management provides students with a range of important information and self-service functionality for key activities:



Assessments, Progression & Classification

In Thesis Student Management, grades can be entered, approved and published, before Progression and Classification rules are run to support year on year progression and Degree awards.





Admissions

Manage the entire Admissions process from application all the way through to registration with Thesis Student Management. By streamlining the application process and automating administrative tasks, your Admissions Team can work more efficiently.

Thesis Student Management includes functionality supporting the UCAS and DfE Admissions processes, and UKVI CAS generation.

Admissions Cycle

The Admissions functionality in Thesis Student Management manages the complete Admissions cycle, supported by an Applicant Portal:



Applicant Portal

The Applicant Portal with Thesis Student Management provides applicants with a range of important information and self-service functionality for key activities:

Application
Form

Application
Progress

Accept /
Decline Offer

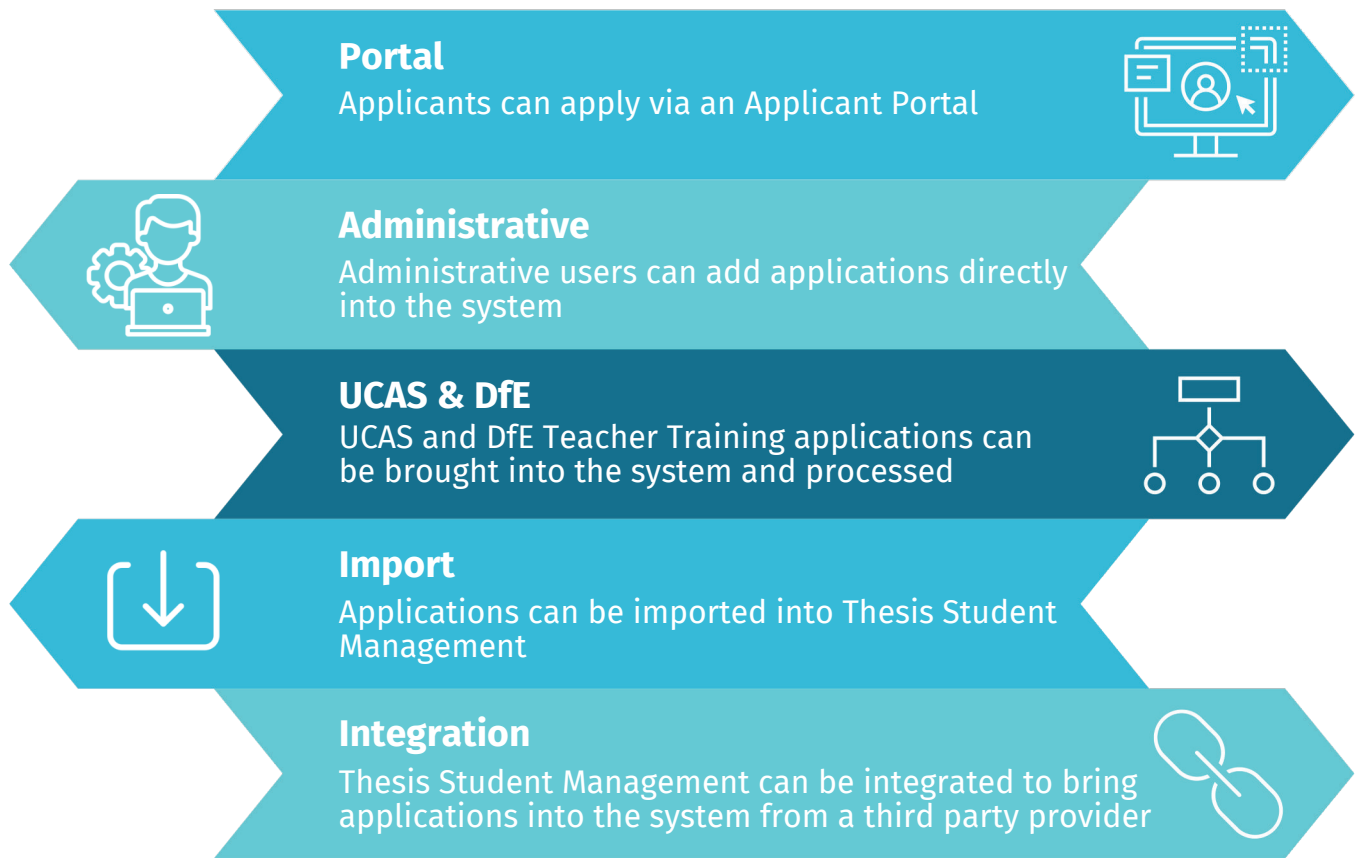
Application
Check List

Upload
Documents

Terms &
Conditions

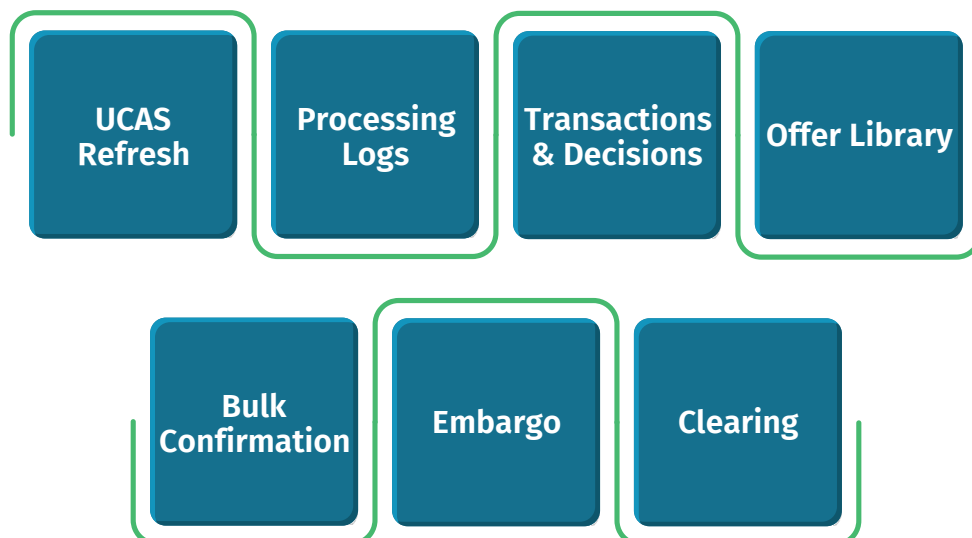
Admissions Sources

Thesis Student Management supports a number of Admissions sources:



UCAS

Thesis Student Management supports the full UCAS Admissions process, with user-friendly functionality:



Thesis has successfully supported Confirmation and Clearing processes, using Thesis Student Management, since 2019.



Use Thesis Student Management to generate tuition fees and other study-related costs securely and confidently, with the ability to set up both programme and course level pricing.

The student Financial Account displays all transactions, invoices, and discounts. Students can view their Financial Account and pay via their portal. Student sponsors and sponsorship values are added to their Financial Account, and sponsors have their own financial account for clear visibility of their transactions and beneficiaries.

The Billing functionality in Thesis Student Management covers these key areas:

Programme Pricing

Course Pricing

Financial Account

Tuition Fee Matrix

Sponsorship

Discounts

Transaction Generation

Invoicing

Payment Plans

Student Payment

SLC

Refunds

Student Loans Company

For Thesis Student Management to work with established Student Loans Company (SLC) processes, it utilises data import and export routines to bring SLC data into the system and completes data processing and analysis to provide export files for upload to SLC.



Thesis Student Management supports the following SLC files:

CMS

Courses Management Service

ESIF

Extended Student Information File

SSAR

Student Support Attendance Request

SSAC

Student Support Attendance Confirmation



Automation & Dashboards

Thesis Student Management offers no-code automation tools, Communication Templates and Dashboards to support Higher Education Institutions streamline and automate their processes, reducing error and improving efficiency.

Rule Sets

Rule Sets in Thesis Student Management are collections of decisions and actions, used to create workflows and automate business processes.



Thesis Student Management includes a number of advanced Rule Sets built into the system, but these can also be built by end users. With a clear user interface, Rule Sets can be set up to analyse data, assign values trigger communications or create records. Rule Sets can be triggered using a data watcher, from a Query List or at certain times when set up as a recurring Rule Set.

Query Lists



Query Lists are dashboards visible on the Thesis Student Management User Boards allowing users to view key information at a glance, in real time. They can be used for data quality analysis or for identifying applicants or students that require action.

Query Lists can be built by end users, and access to view or modify the Query List can be easily set and amended. Criteria on Dashboards allow users to easily filter the result set, meaning a single Query List can be used extensively with different filters. Query Lists are actionable as well; they can be used to trigger Communications and Rule Sets as required.

Communications

Automatically or manually send Communications from Thesis Student Management using Communication Templates; Communications can be triggered from Query Lists and Rule Sets.

System Management

Manage user Roles, Permissions and Single Sign-On with the Thesis SM System Management module. You can also extend the data model of Student Management with easily configured Flexi-Fields.



Flexi-Fields



Thesis Student Management gives users the ability to add Flexi-Fields to the existing set up, extending the data model via simple configuration.

Thesis Student Management Flexi-Fields are more than just user-defined fields added to specific screens; they are added to the system tables, can be managed through user permissions, and can be used in Reports, Rule Sets and Query Lists in same way as the fields provided by Thesis Student Management can.

They are therefore powerful tools, which can help an institution manage and streamline its specific business processes.

Roles & Permissions

Use Thesis Student Management Roles and Permissions to manage access to the system, allowing users to view, create, and update records or fields. Permissions are assigned to specific roles, with users then assigned to those roles; users with multiple roles will receive the cumulative permissions of all their roles.

Single Sign-On

Thesis offers a Single Sign-On Service to ensure that authenticated users can simply access Thesis Student Management, improving user experience and enhancing security.

Reporting



Reporting in Thesis Student Management provides institutions with different options to access and analyse their data.

Standard Reports

Standard Reports are pre-defined and delivered with Thesis Student Management, to meet some of the typical reporting needs of institutions.

Ad Hoc Reports

Ad hoc reports are created by the user in Thesis Student Management using provided data sets, with drag and drop capabilities. Once created, ad hoc reports can be saved for future use.

User Defined Reports

User Defined Reports are reports developed by an institution outside of the system using SSRS; they can then be added to Thesis Student Management via the Report Manager as User Defined Reports.

Query Reports

Query Reporting is an in house reporting tool that provides a user friendly report building experience, without the need for coding skills. Easily drag and drop fields, add headers, images, and various controls like text boxes, check boxes, tables, and graphs.

Once created, reports can be saved, published to Student Management, or exported, making them highly versatile for different reporting needs.

With the default installation of Thesis SM, you have the option to configure a replicated database. This allows your institution greater flexibility to fully harness the power of your data within your existing enterprise architecture. The replica database is refreshed in near real time, meaning data is up to date and relevant.



Ready-built for the UK, with a full suite of UK Statutory functionality

Statutory Reporting

Integrated Statutory Fields

Statutory Reporting Data fields are seamlessly incorporated within Thesis Student Management's functional screens for effortless updating while you work.

Effortless Data Collection

Statutory Reporting Data is sourced directly from core Thesis Student Management fields, removing the need for redundant and repetitive data entry.

Data Hierarchy

Data is gathered for a HESA Data Futures Return through a structured Data Hierarchy that collects data in a priority order.

Real-Time Data Collections

Data Collections are quick and in real time.

Query Lists

Harness the full potential of Thesis Student Management's Query Lists to easily analyse your data for Statutory Reporting.

Admissions

- UCAS Undergraduate
- UCAS Conservatoire
- DfE Teacher Training

Billing

- SLC

UKVI

- CAS

Data Privacy

- GDPR
- Anonymisation
- Deletion

Statutory Reporting

- Data Futures
- ITT
- Graduate Outcomes
- Provider Profile
- Aggregate Offshore Return
- Discover Uni
- HESES
- ILR

Thesis Student Management covers all UK Statutory Requirements with ease, thanks to our teams' extensive industry experience. We collaborate closely with our clients to guarantee a reliable, user-friendly system that complies with regulations. Plus, we make sure to keep everything updated with regular releases to stay in line with any changes in Statutory Requirements.

Technical Key Facts

Student Management (SM) is a cloud-based solution built on Microsoft Azure, ensuring speed, security and data integrity.

How are updates managed?

We prioritise providing you with regular updates to enhance your experience with SM, as well as flexibility in managing your upgrade schedule.

Key Facts:

- Two releases per quarter
- Single code base with access to all new features
- Extensive testing suite of 8,000+ test cases
- Isolated client deployments
- Environments for testing and training purposes
- Automated deployments, managed around your institutional calendar

How flexible is SM?

Integration

SM provides an extensive suite of exposed APIs for Integrations as well as a dynamic message based Integration Platform with both a pub/sub and batch model.

Scalability

With flexible scaling for the number of students at an institution, SM is highly scalable for the largest institutions at their peak times.

Customisation

SM offers a customisable front end with our Wordpress CMS based Applicant and Student Portal, which can be branded to fit your institution.

Is my data secure?

SM is securely hosted in the cloud, guaranteeing protection at every level of the product. Security is centralised and we adhere to **ISO 27001**, a globally recognised standard that establishes a robust framework for safeguarding and managing data. These standards emphasise the utmost importance of information security and operational integrity within Thesis.

Key Facts:

- Client data is isolated and secured
- Data is encrypted in transit and at rest
- Data is region locked
- Multi-Factor Authentication
- GDPR Compliant Data Handling
- User Level Security
- Single Sign-On



“We chose Thesis Student Management as the best system to meet our needs today and well into the future. Not only were they able to get the system live in under a year, but their implementation processes helped us to improve how we worked.”

- Professor Ray Lloyd, CEO of Global Banking School



Time to move to a modern SIS!

Transform your institution with powerful, reliable, scalable and cloud-native Student Information System.

Find out more at: www.thesis.sm

